

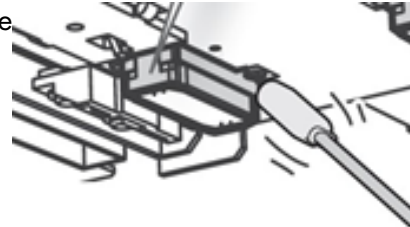
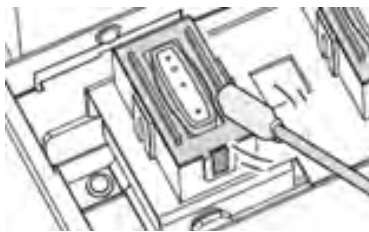
# LEF Series Head Wash

## Notice

All ink is discharged during this operation. This procedure should only be performed by, or under the guidance of an authorized Roland service agent.

## Before you begin

This procedure will require six (6) SL-CL Cleaning Cartridges. LEF-12 models need (4) SL-CL Cleaning Cartridges. Perform a manual cleaning and replace worn consumable.



## Entering Service Mode

1. Turn the main power on and the Sub Power off.



2. Using the arrow keys enter the sequence below:



3. Now press and hold down the Left, Down, and Right arrow keys while pressing the Sub Power key. The machine will power on in Service Mode and display the SETUP prompt.



SETUP MEDIA



Performing Head Wash

1. From the SETUP prompt press [MENU]



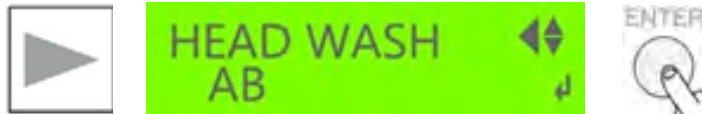
2. Press the left arrow key to enter the service menu. Press the down arrow key until SUB MENU appears. Press the left arrow to enter the SUB MENU.



3. Press the down arrow key until SUB MENU appears. Press the left arrow to enter the SUB MENU. Press the down arrow until HEAD WASH appears.



4. Press the right arrow to enter the HEAD WASH menu. Press [ENTER] to begin the head wash process.



5. Empty drain bottle when prompted and press [ENTER]



6. Remove ink cartridges



7. Insert 6 Cleaning Cartridges.



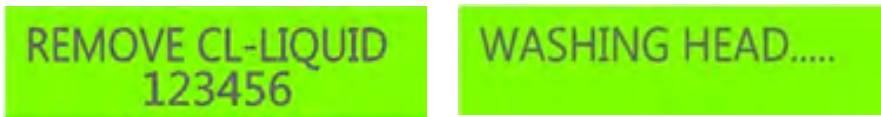
8. Remove cleaning cartridges. Empty drain bottle when prompted and press [ENTER]



9. Insert 6 cleaning cartridges



10. Remove cleaning cartridges.



11. Turn the Sub Power and Main Power switch off when the SUB MENU/HEAD WASH prompt appears. The head wash process is complete.



Please consult the applicable setup guide when returning the printer to service.

