

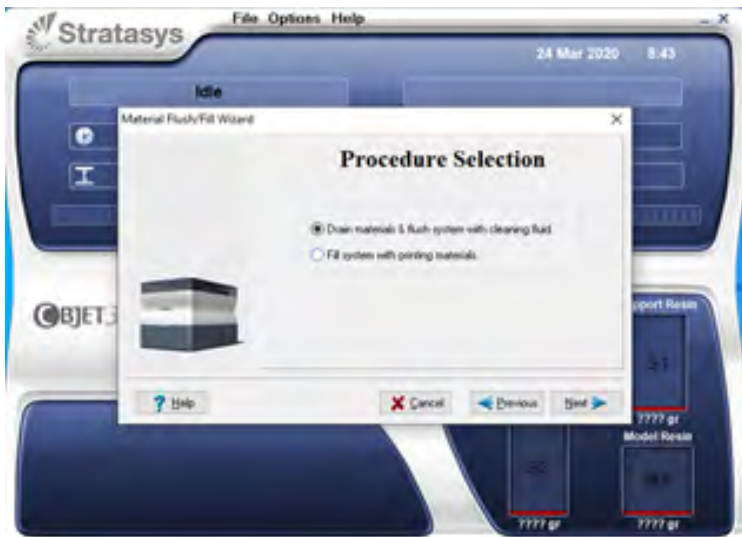
Polyjet Extended Shut Down

For an extended shutdown, we want to fill the system with cleaning fluid. To do this we will use the Material flush/fill wizard.

From the options menu, select Wizards, then material flush/fill.



Select 'Drain materials & flush system with cleaning fluid'



Follow the prompts in the dialog. Do a manual shutdown at the end of the procedure and turn the printer off.

I recommend leaving the cleaning cartridges in the printer while it is shut off. That will remind you of what kind of shutdown you did.

